



Single Black Gooseneck, A08410



Dual Chrome Gooseneck, A08500

Single and Dual Goosenecks

Obedient, incident illumination for space constrained applications.

Features

- Made with chrome plated semi-obedient metal or black dekabon semi-rigid gooseneck tubing.
- The standard output ferrules accept spot lenses with or without polarizing caps. (See Accessories section of the product catalog for details).
- Model number A08575 is a dual focusing gooseneck that has permanently attached spot lenses. They are easily focused by turning the knurled lens barrel(s).
- Custom configurations are available. Lead time is required

Advantages

- Precise positioning offers complete control of light placement.
- Gooseneck legs placed in opposing positions create near shadow-free illumination.
- Re-adjust with ease.
- Dual models illuminate workspace with a single light source.

Goosenecks					
Part No.	Tubing	Distal Ferrule Diameter	Active Input Fiber Diameter	Gooseneck Tubing Diameter	Gooseneck Length
Single					
A08400	Chrome	.20" (5)	.393" (10)	.47" (12)	18" (457)
A08410	Black	.20" (5)	.393" (10)	.47" (12)	30" (762)
Dual					
A08500	Chrome	.30" (8)	.393" (10)	.47" (12)	18"(457)
A08575	Black	.30" (8)	.21" (5)	.47" (12)	23" (584)

**Dimensions in () are in mm*

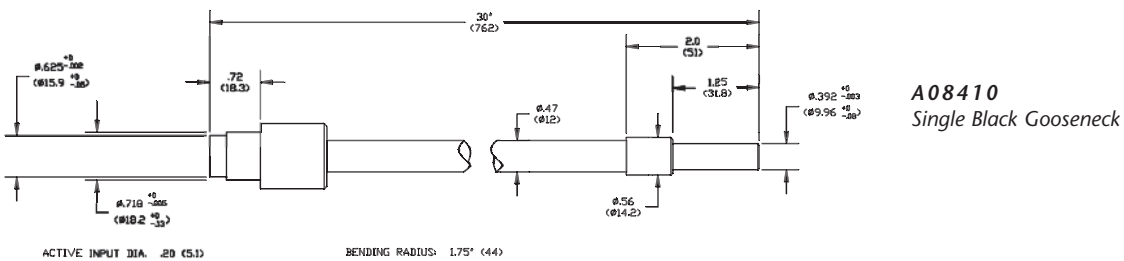
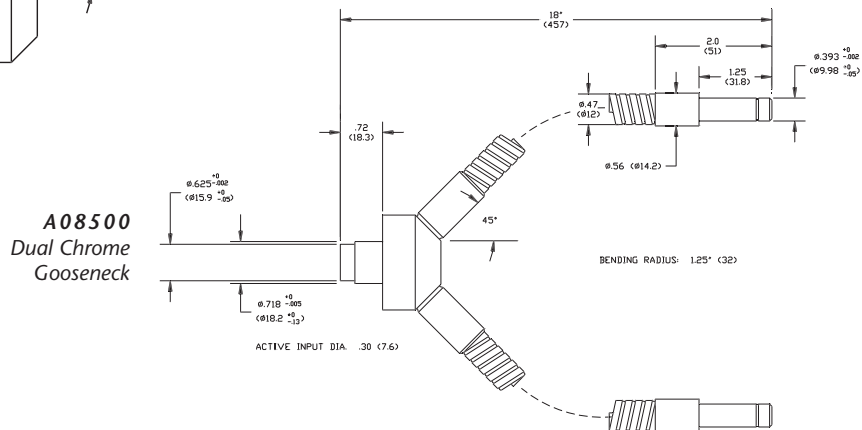
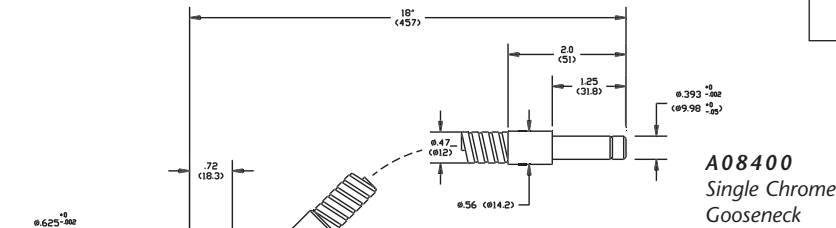
Single and Dual Goosenecks

Dimensions in () are in mm

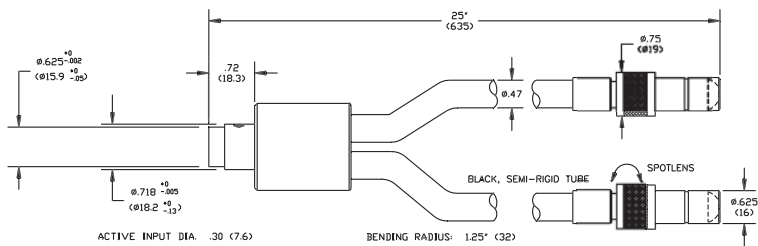
Product improvements may result in specification or feature changes without notice.

Ringlight Input: Black Anodized Aluminum
Bundle Sheathing: Chrome or Black Decabon

Warning: This product is manufactured with glass fiber. Not for use in cable/hose carrier. Call SCHOTT to discuss moving cable/hose carrier applications.



A08575
Dual Black Gooseneck



ISLAND OPTICAL SINGAPORE (S) PTE LTD

No.18 Boon Lay Way
 #08-121 TradeHub 21
 Singapore 139944
 Phone: (65) 6515-9110
 Fax: (65) 6515-9112
 E-mail: islandos@pacific.net.sg
 www.islandos.com.sg

SCHOTT
 glass made of ideas