

RL113

High Brightness LED Bright Field Ring Light

Aii High intensity from a long working distance

Aii IP65 compliant design



Ordering Information

Standard Product:
Shipped Next Day

RL113-WHIIC

Configured with in-line
current source

Standard Product Variation:
Shipped Within Two Weeks

	Spectral wavelength	Optional power compatibility	Alternative Connector
RL113 -	XXX	XX	XXX
(blue)	470	IC	M12* (male)
(green)	530	IS	
(red)	625	C2	
(IR)	850	C3	
(white)	WHI	C5	
		24	

IC = ICS (requires 24v power supply)

IS = ISU (requires 24v power supply)

C2 = Ai Connector

C3 = Pulsar 710 Connector

C5 = Pulsar 320 Connector

* Available with IC, IS, and 24v options only

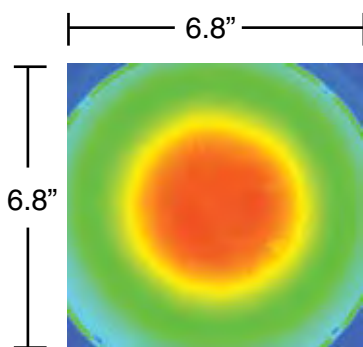
Optimal working distance:

300mm (12")

Effective Working Range:

225mm - 600mm (9" - 24")

Intensity Distribution



Working Distance: 300mm (12")

